



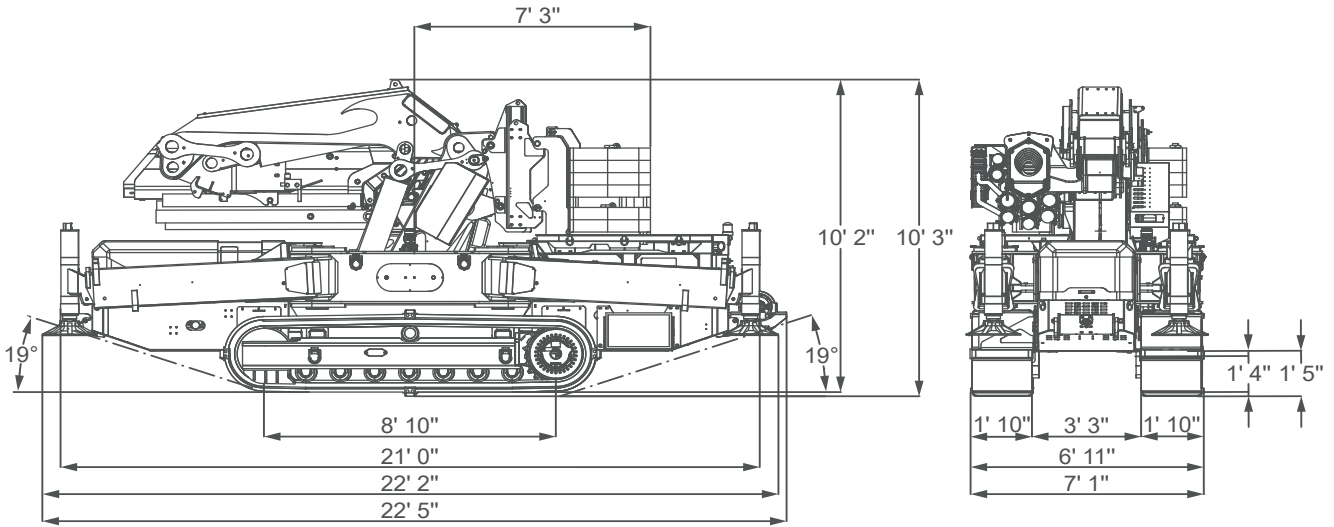
Technical Data

Specification & Capacities

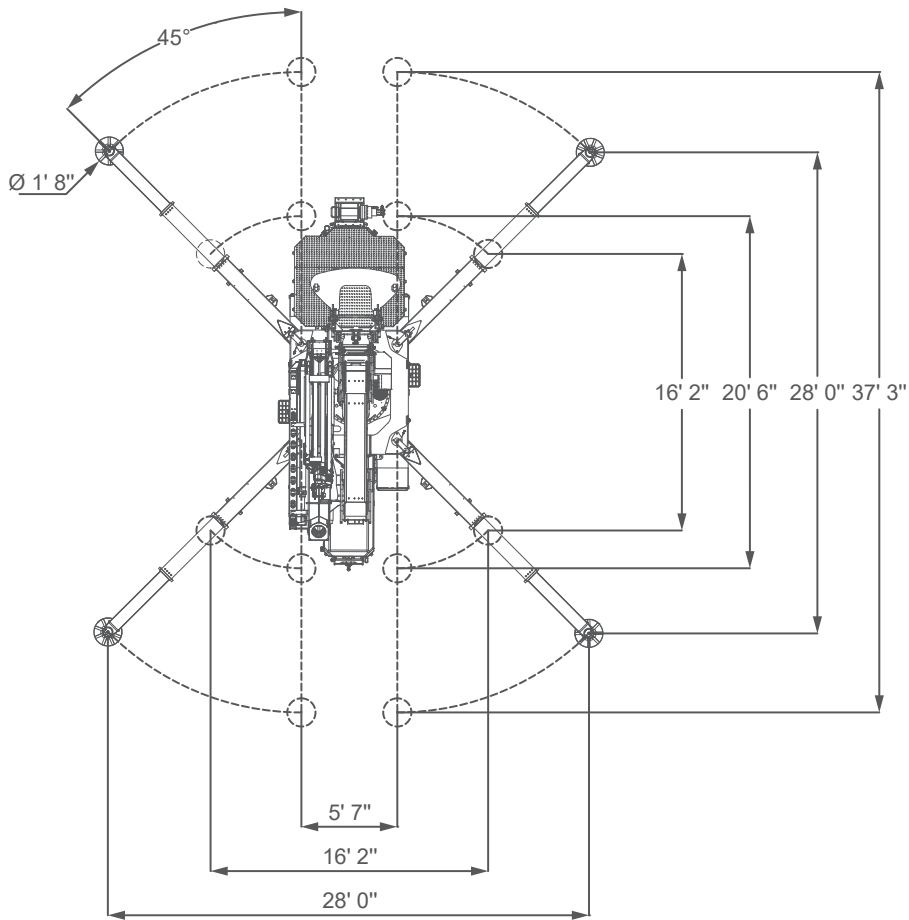
JF990

OVERALL DIMENSIONS

(without jib and low marking pads)



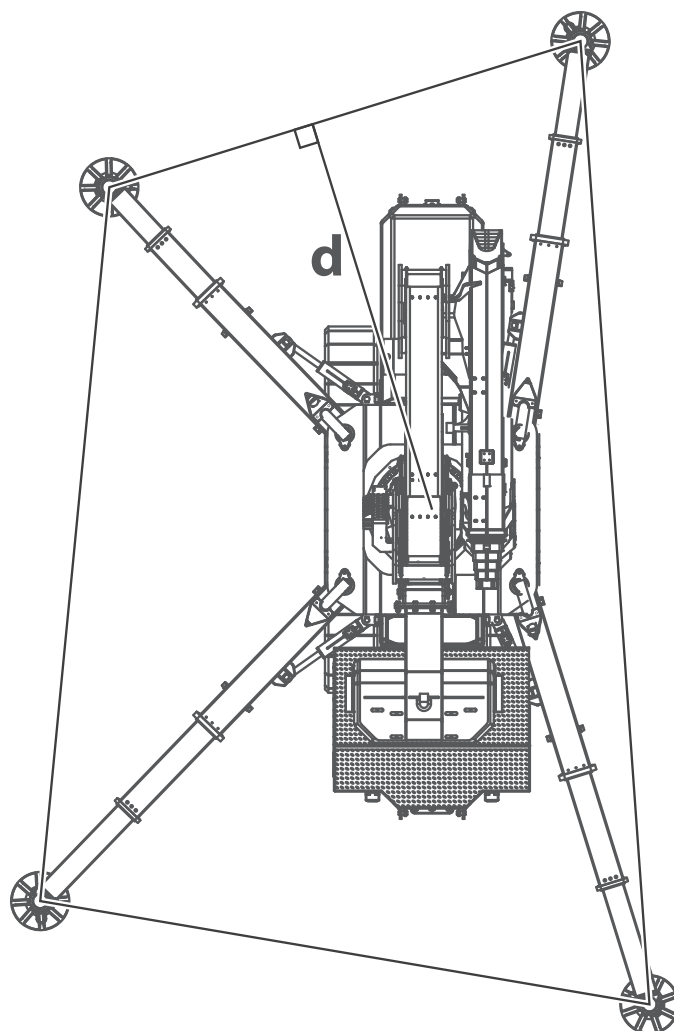
STABILIZATION AREA



Min stability angle: 0°
Max stability angle: 45°

[mm]

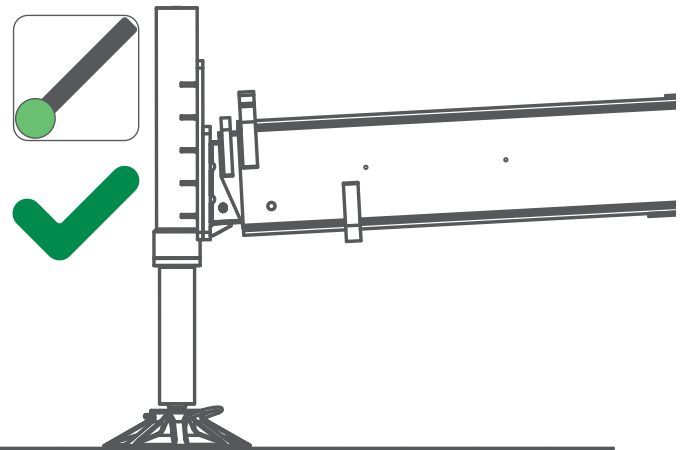
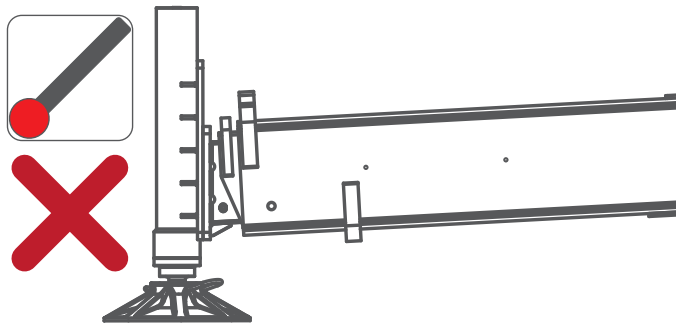
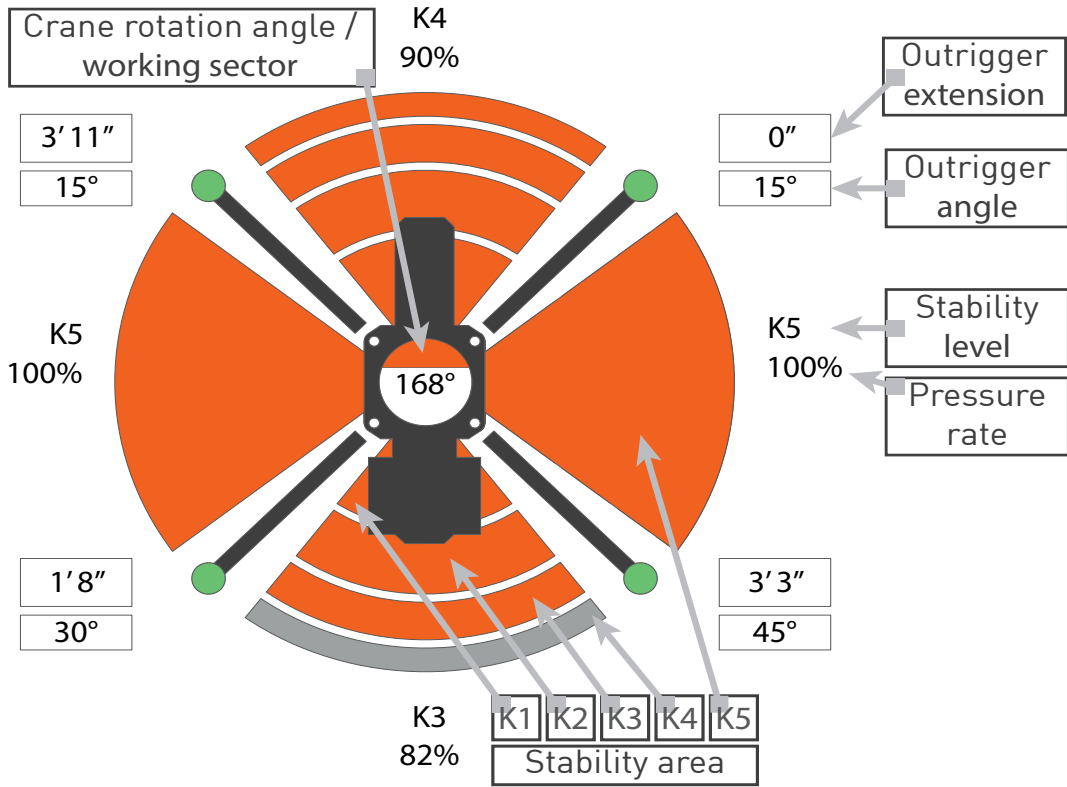
CRANE PERFORMANCE



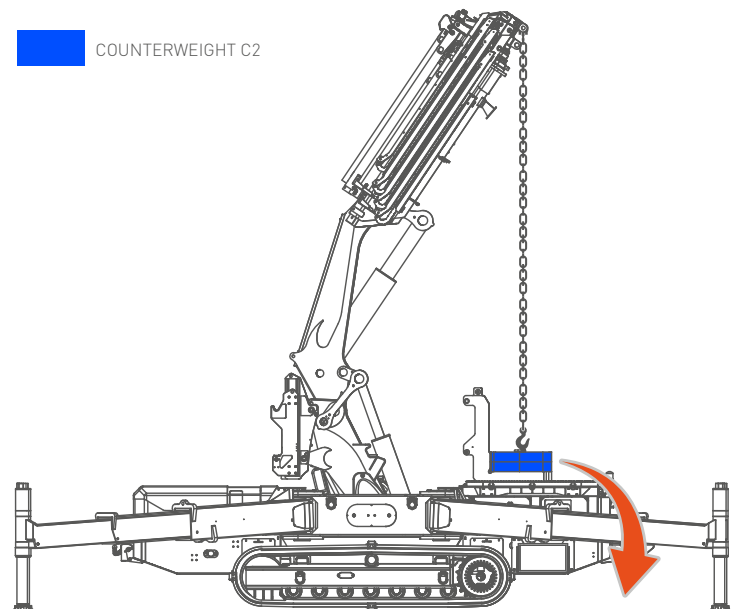
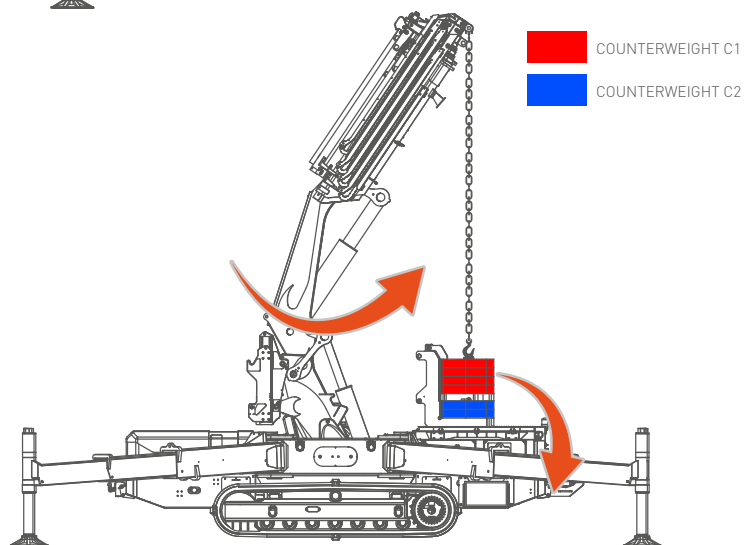
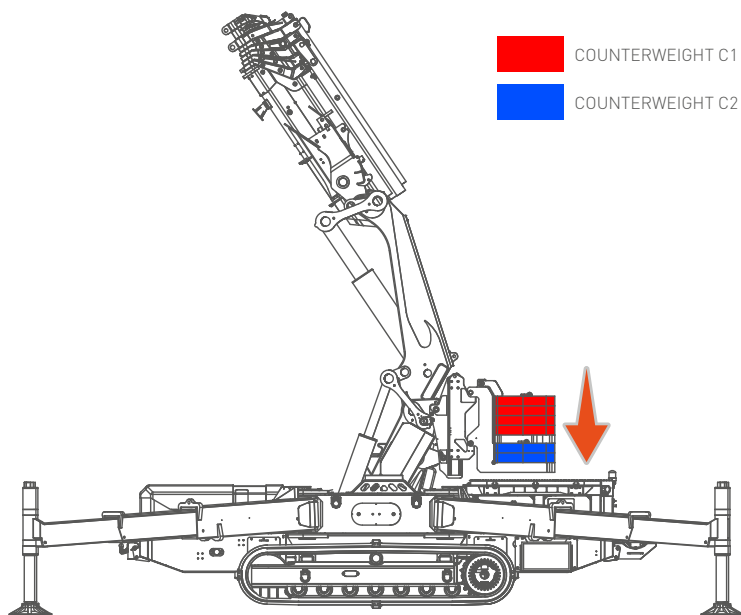
K	d min	d max
K1	3' 2"	7' 8"
K2	7' 8"	9' 6"
K3	9' 6"	11' 6"
K4	11' 6"	13' 5"
K5	13' 5"	-

STABILIZATION CHART

The division into 4 areas is a schematic representation, software adapts pressure level constantly.

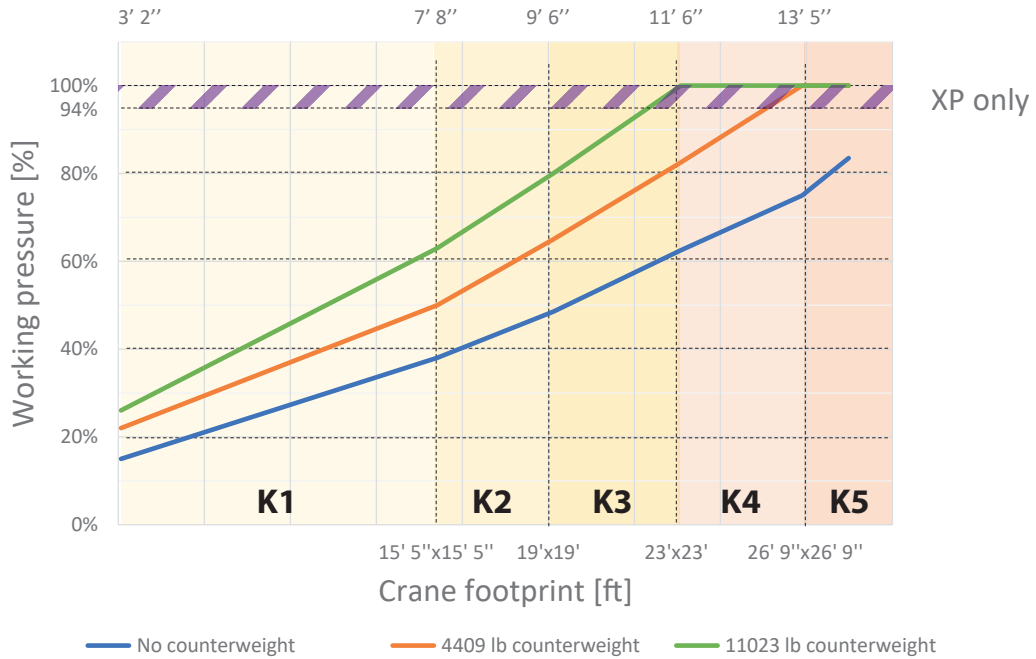


COUNTERWEIGHT REMOVAL

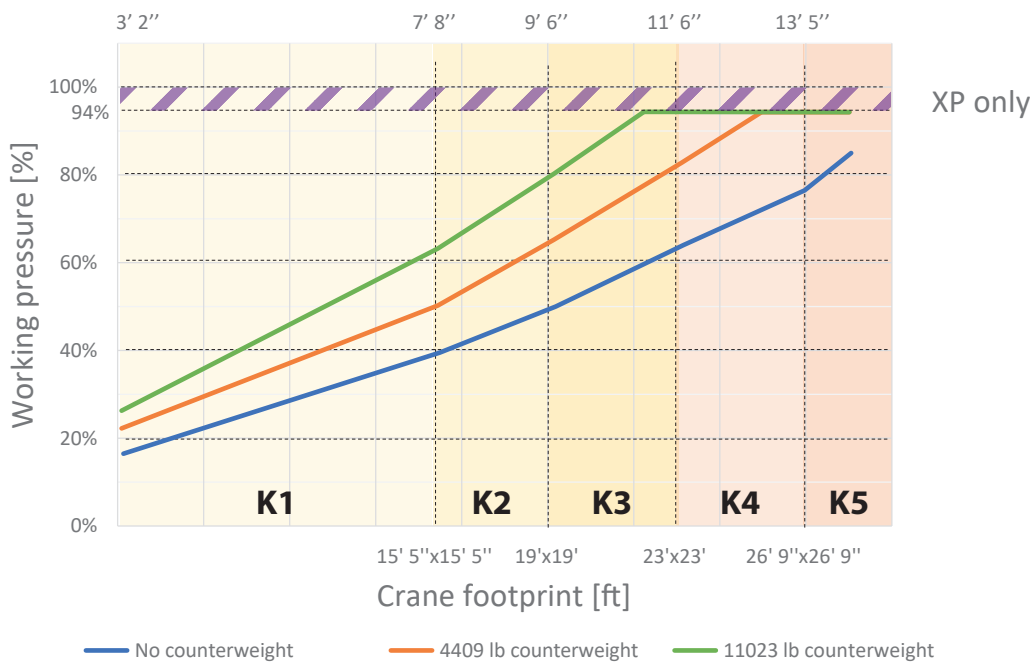


JF990 - MAIN BOOM

with HOOK

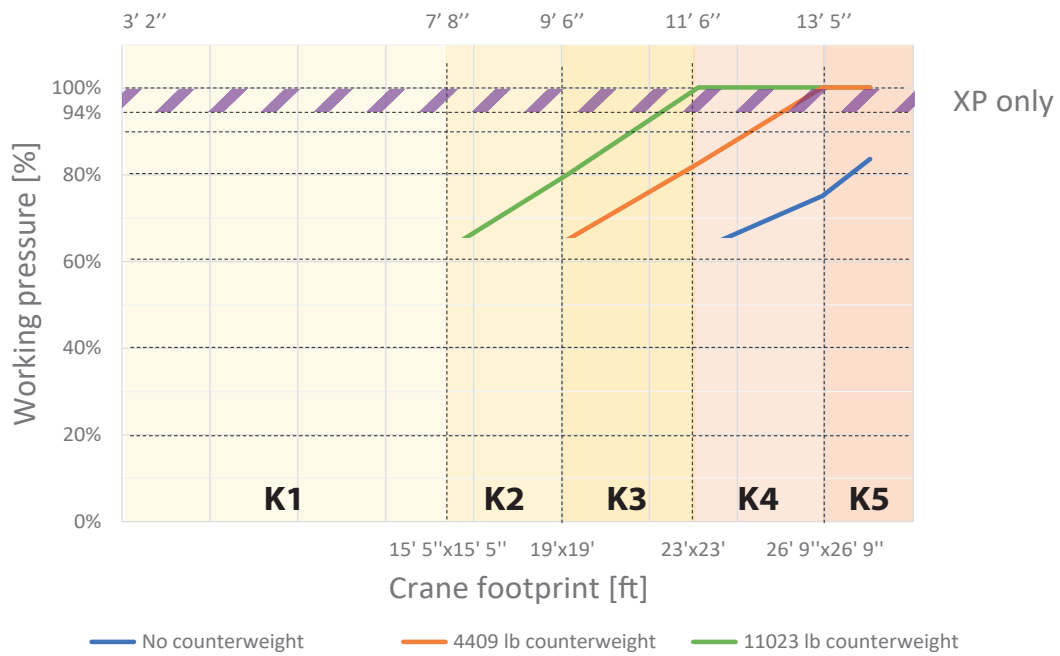


with WINCH

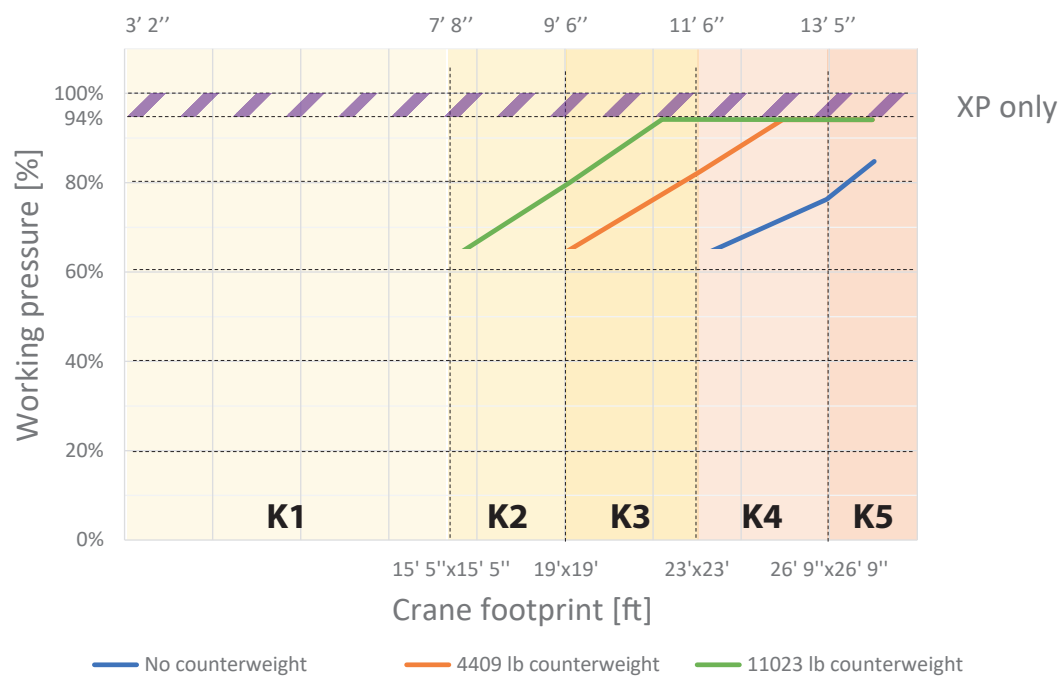


JF990 - JIB5400.6HA

with HOOK



with WINCH







OVERALL INFORMATIONS


CRANE INFO		NAME	DESCRIPTIONS	U.M	VALUE
CRANE INFO		OVERALL DIMENSIONS	Height	ft	10' 3"
			Length		22' 5"
			Width		7' 1"
		BOOM	Length	ft	92' 6"
			Speed	s	55°
		SLEWING	Working Angle	°	360°
			Speed	ft/s	3.3
		LIFTING	Angle	°	0°/80°
			Speed	s	Primary: 36 Secondary: 37
			Max Capacity	lb	46,297
			Max Outrigger Bearing Load	lb	36,045 [§]
			Track load	lb/in ²	170
			Travel Speed	mph	1.37
			Gradeability	°	20° (36%) [‡]
		Working Temperature	°C	-20°/+40°	
		Lifting Class			


WEIGHTS					
WEIGHTS		CRANE	All	lb	45,195
		COUNTERWEIGHT	CW-1	lb	6,614
			CW-2	lb	4,409
		HOOK BLOCK	Single Fall	lb	161
			Double Fall	lb	157
			Triple fall	lb	163
			Jib single fall	lb	185

*: Dry weight
†: Kit including pulleys

‡: Engine working limit
§: Static lifting
◊: Measured without load, fully stabilized and without XP

ACCESSORIES		JIB	JIB5400.6HA	lb	3,858
		MARKING PADS LOAD	WTP-JFX	lb	1,653
		OUTRIGGERS MATS	OM500	lb	66
		POWER PACK	3-Phase Power Pack	lb	176

ENGINE		MAIN ENGINE	Power	kW	55
			Horse Power	HP	75
			Tank capacity	gal	19.8
		AUXILIARY ENGINE	Power	kW	13
			Horse Power	HP	17.4

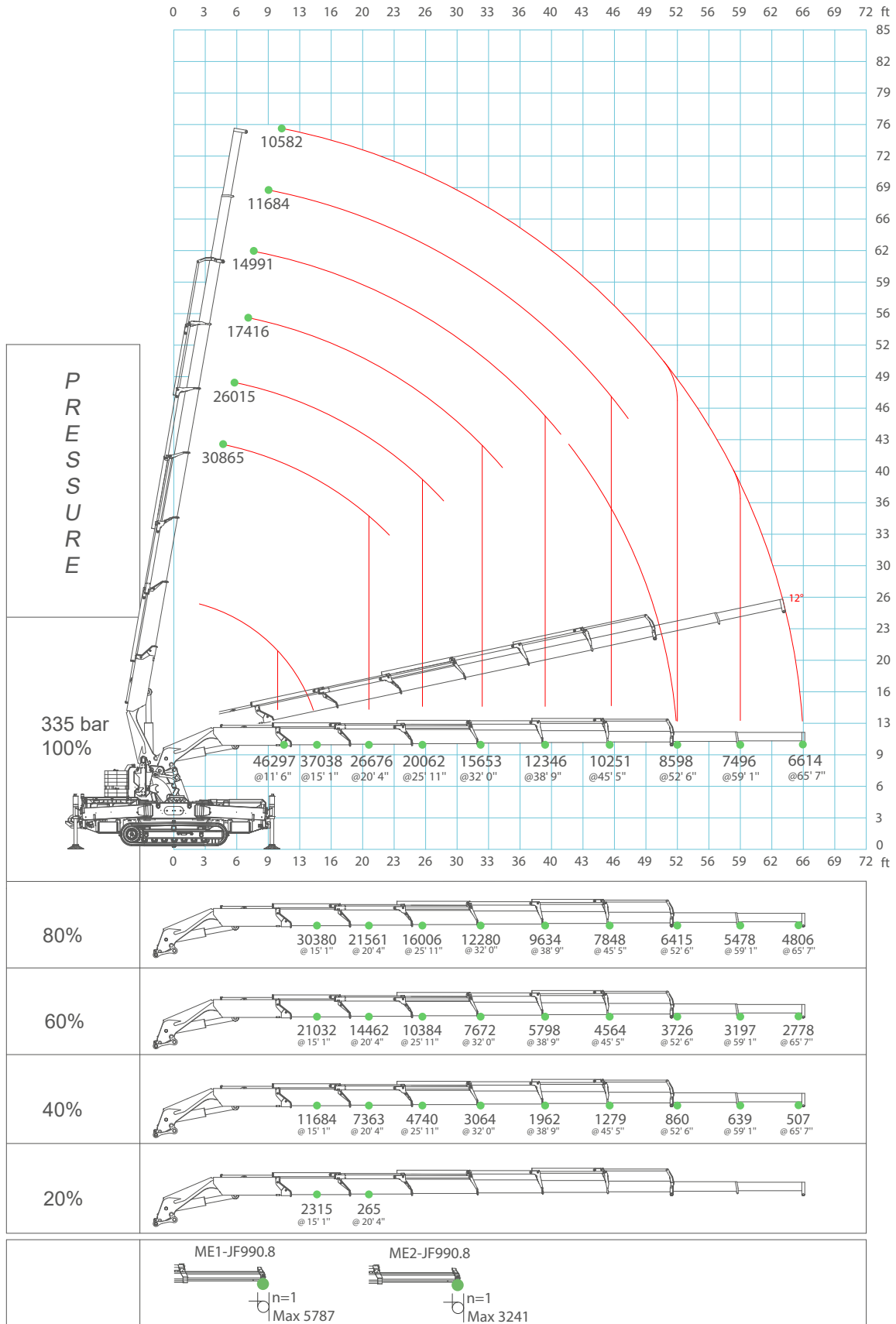
HYDRAULIC SYSTEM		Working Pressure		bar	320
		Tank Capacity		gal	71.3
		OIL	Type	Mineral	ISO 6743-4:HV
			Viscosity Grade	VG	46
		MAIN PUMP	Type	Axial Piston Pump	
			Displacement	in ³ /rev	4.88
			Max Oil Flow	gal/min	42.2

WINCH PERFORMANCE

ROPE	Wire rope	Max load	Ø	Total length
		lb	in	ft
	Right lang lay	66,139	9/16"	196' 10"
HOOK BLOCK	Block type	Load	N° of	
		lb	Sheaves	Lines
	Triple fall block	19,842	1	3
	Double fall block	13,228	1	2
	Single line	6,614	-	1

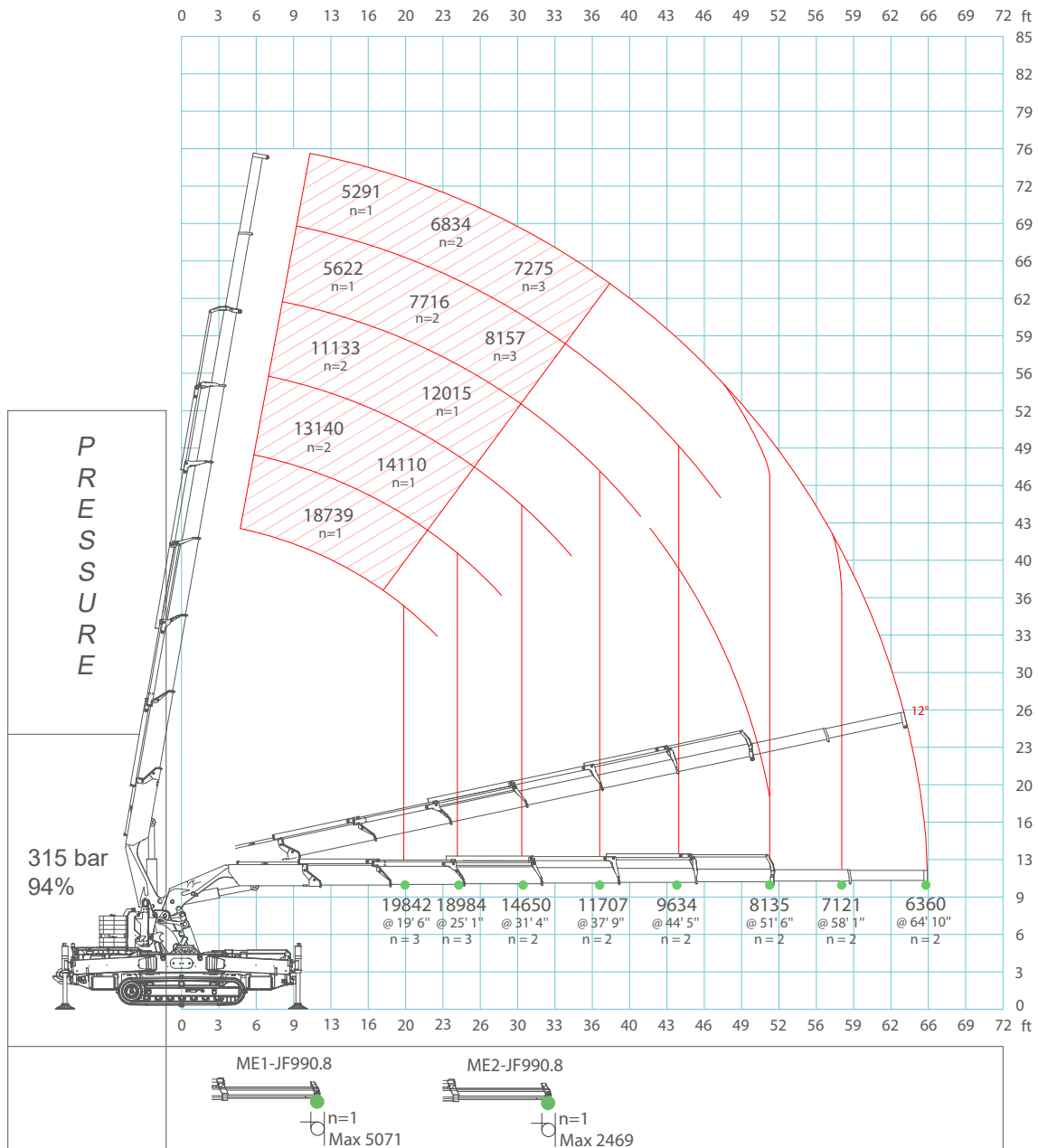
JF990 - MAIN BOOM

HOOK configuration



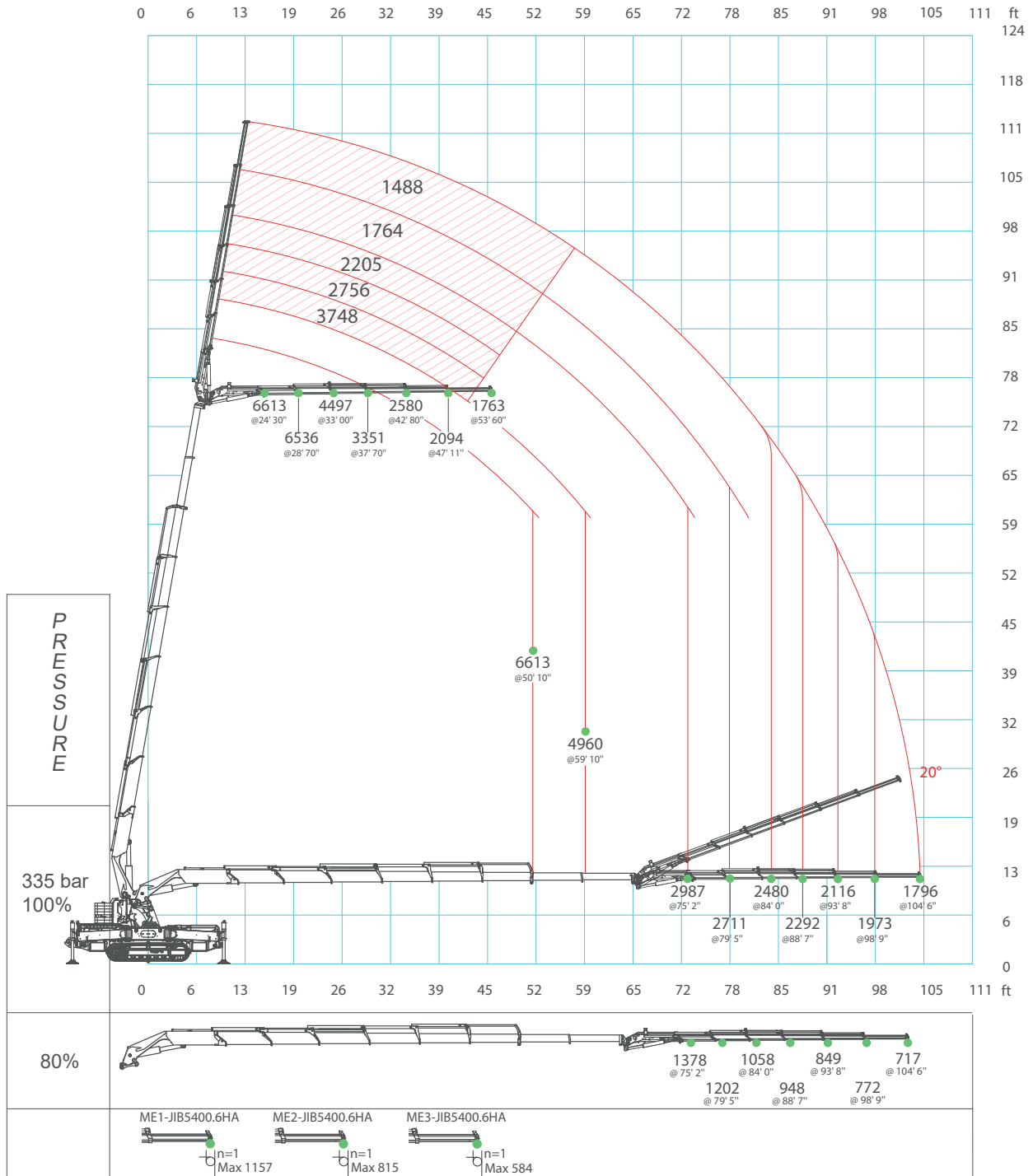
JF990 - MAIN BOOM

WINCH configuration



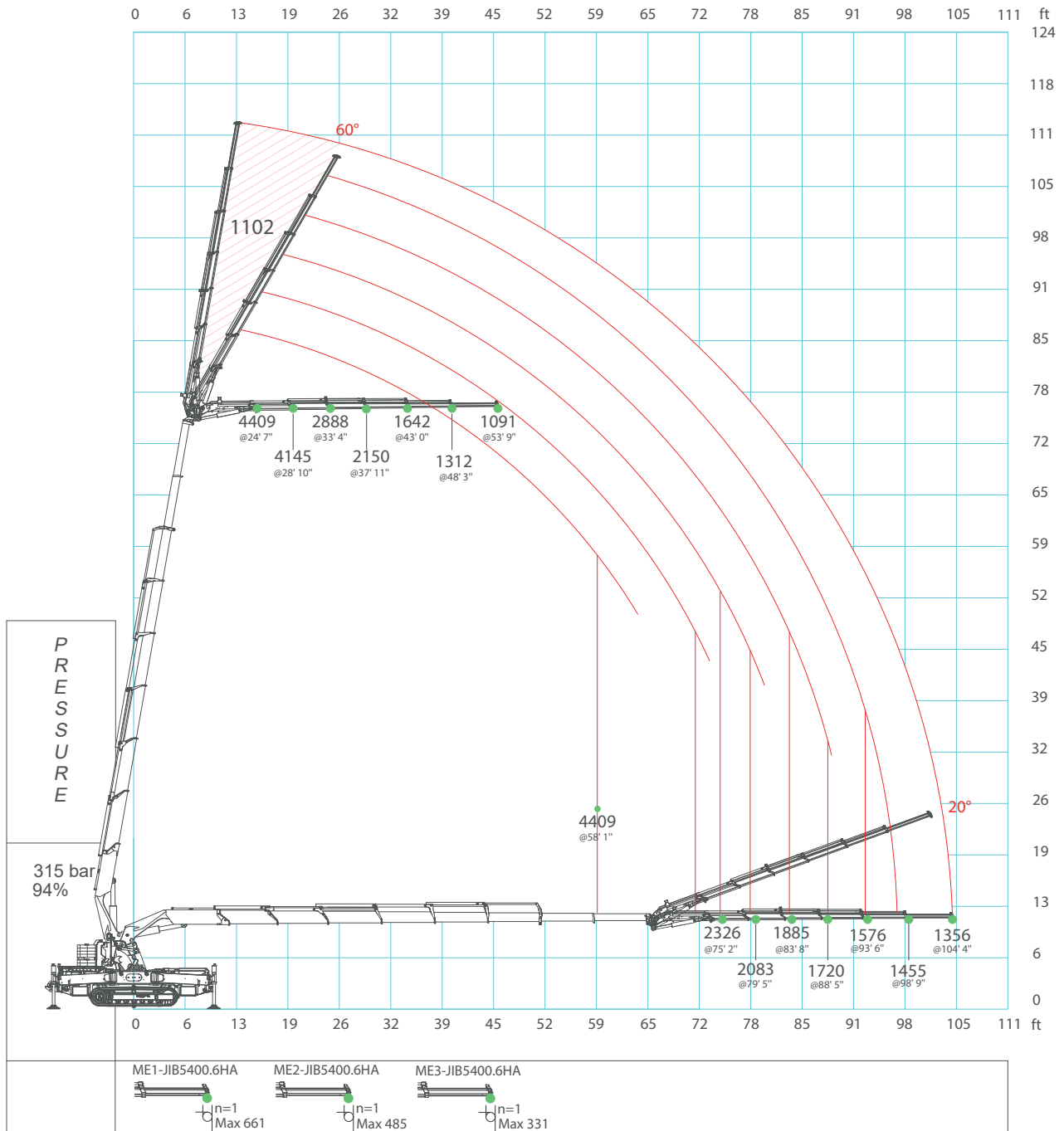
JF990 - JIB5400.6HA

HOOK configuration



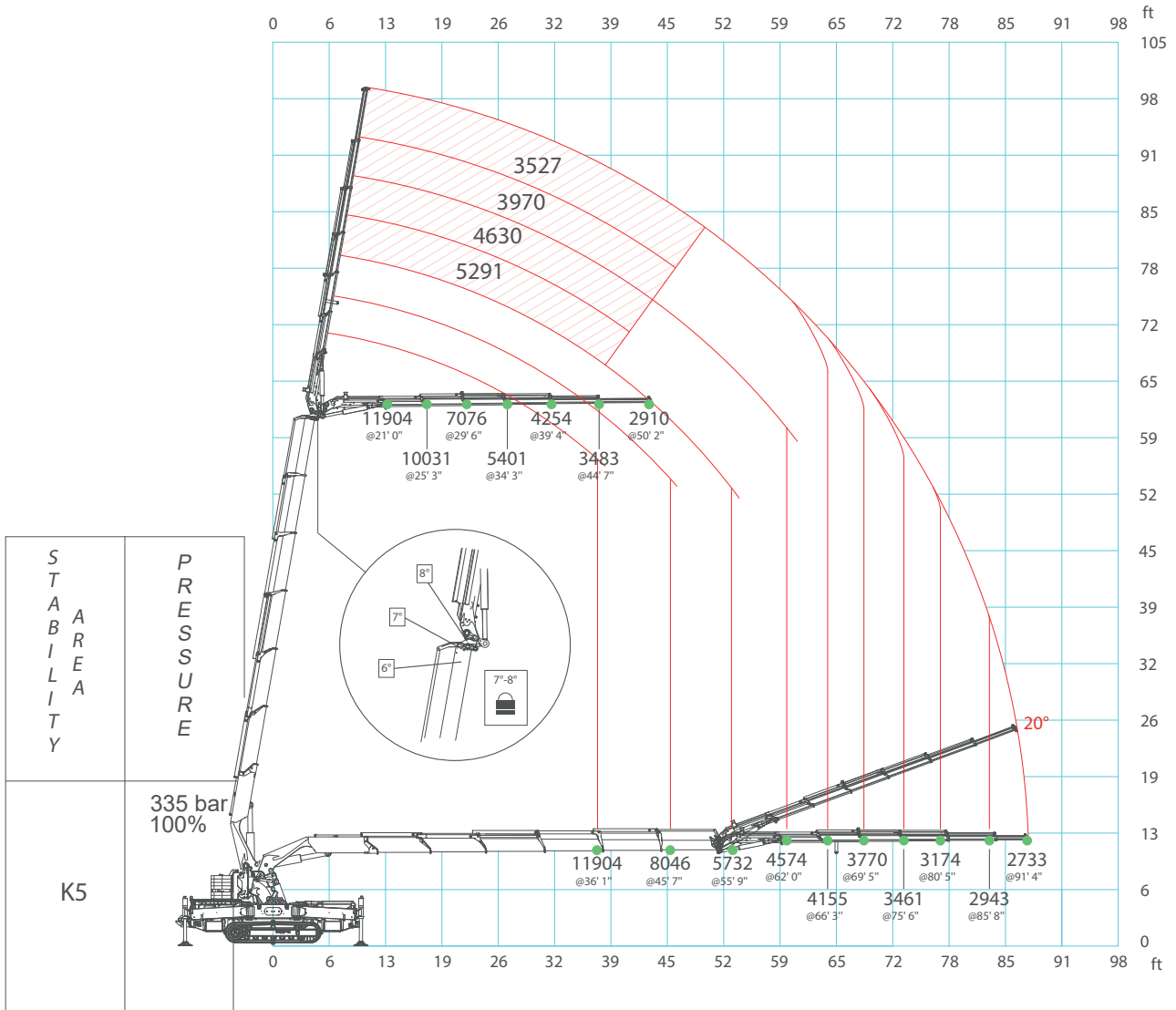
JF990 - JIB5400.6H

WINCH configuration



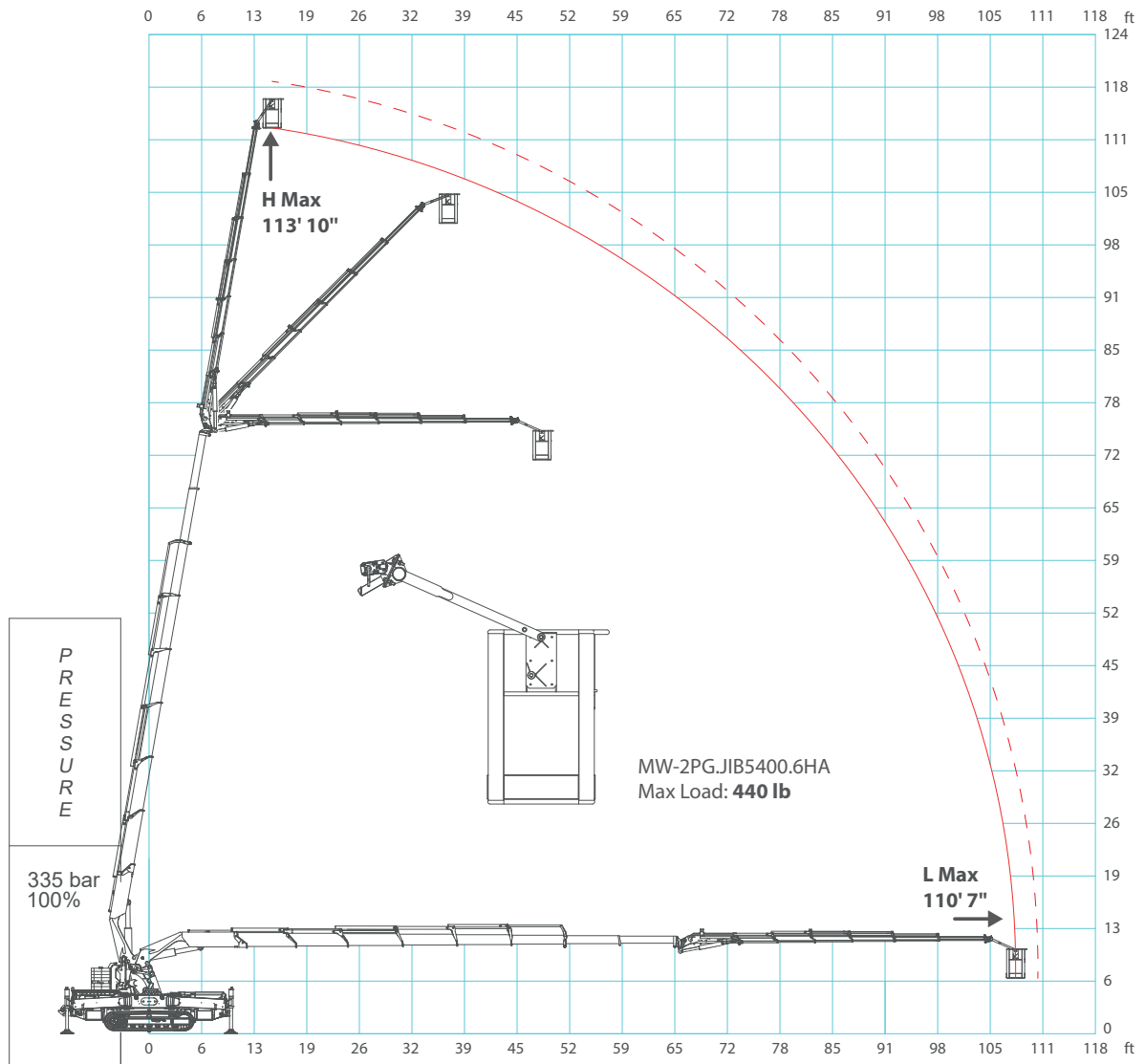
JF990 - JIB5400.6HA

JPD configuration



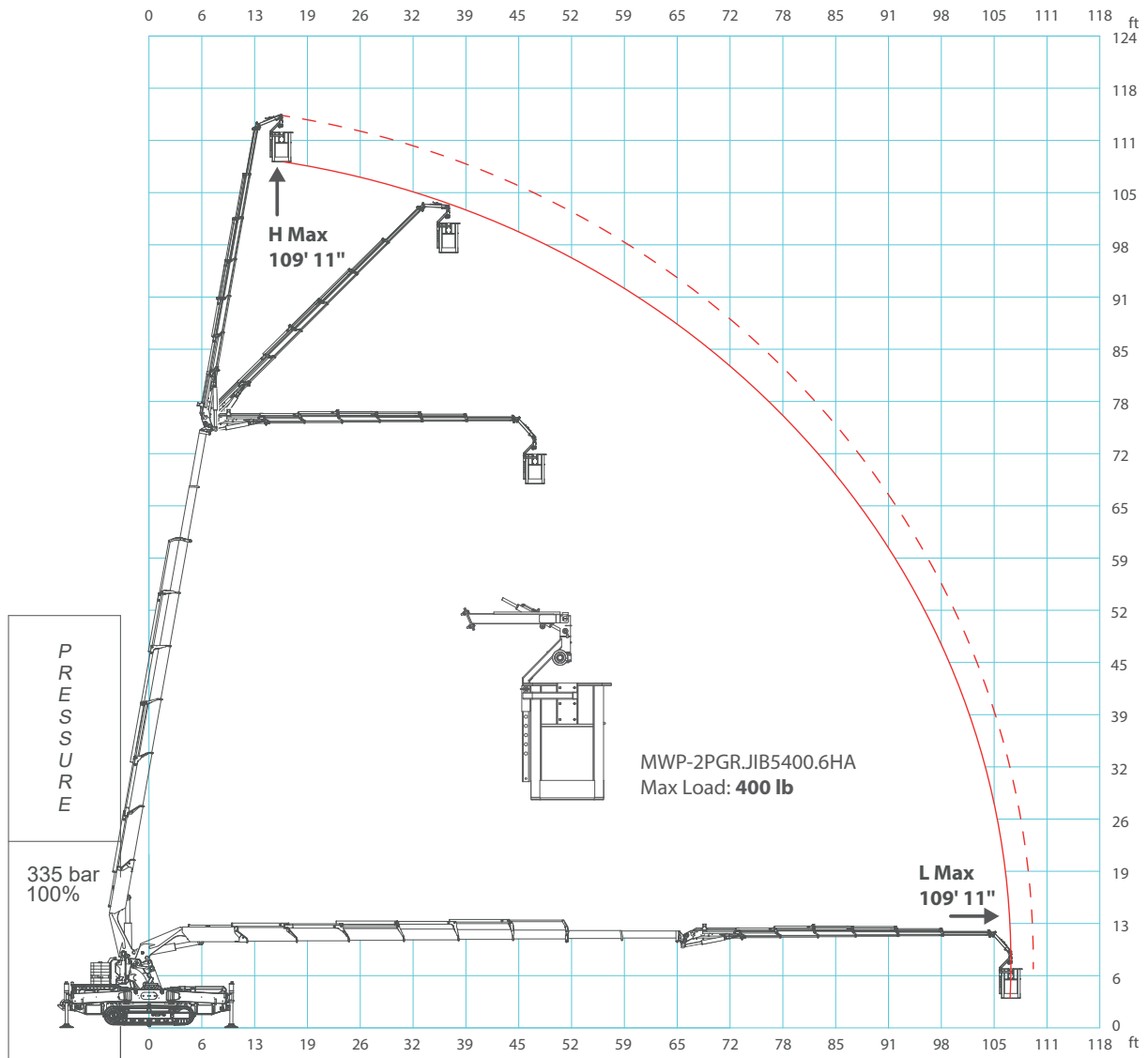
JF990 - MWP-2PG.JIB5400.6HA

Man Working Platform



JF990 - MWP-2PGR.JIB5400.6H

Rotating Man Working Platform for 2 Workers

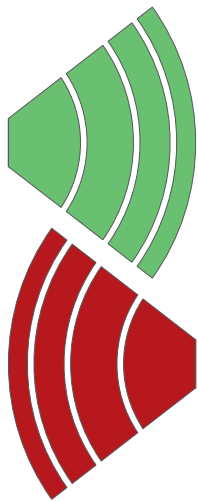


PLE STABILITY CONDITION

Maximum stability needs 8 conditions: 4 complete outriggers rotation and 4 complete outriggers extension. Every lack of condition induces a loss of working area. If more than one condition lack inhibit sectors are added.

Outrigger rotation is considered at its maximum when angle is $\geq 43^\circ$.

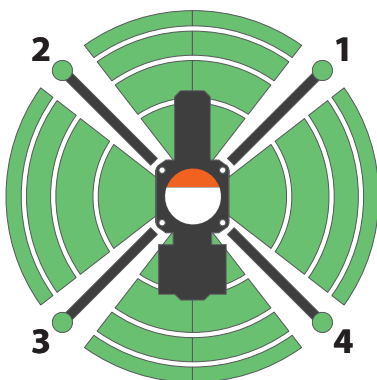
Outrigger extension is considered at its maximum when is greater than $\geq 95\%$.



Permitted working area.

Not permitted working area.

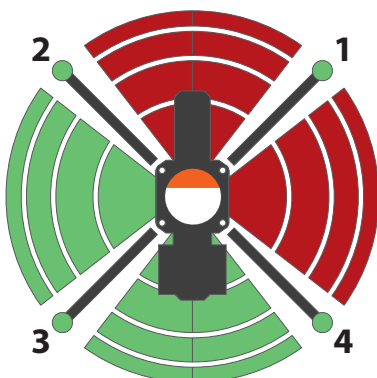
Some examples of the 8 conditions of maximum stability:



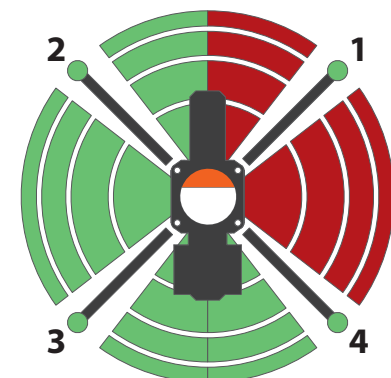
Maximum stability:
Full rotation of the outriggers.
Full extensions of the outriggers.



If even a single outriggers is not on the ground no possible movement is permitted.



Outrigger 1 not fully extended but fully rotated.

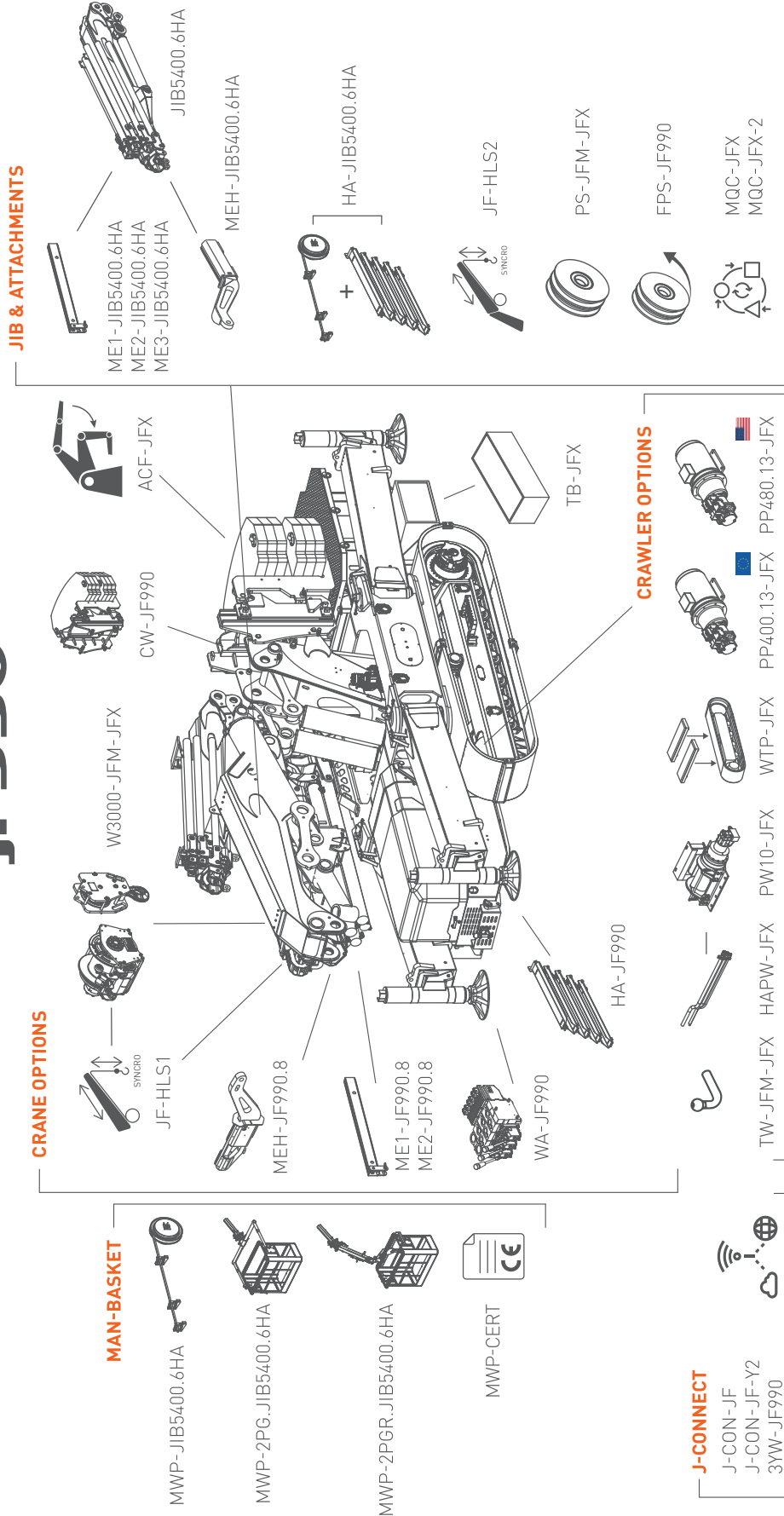


Outrigger 1 fully extended but not fully rotated.

ACCESSORIES

JF990

JF990

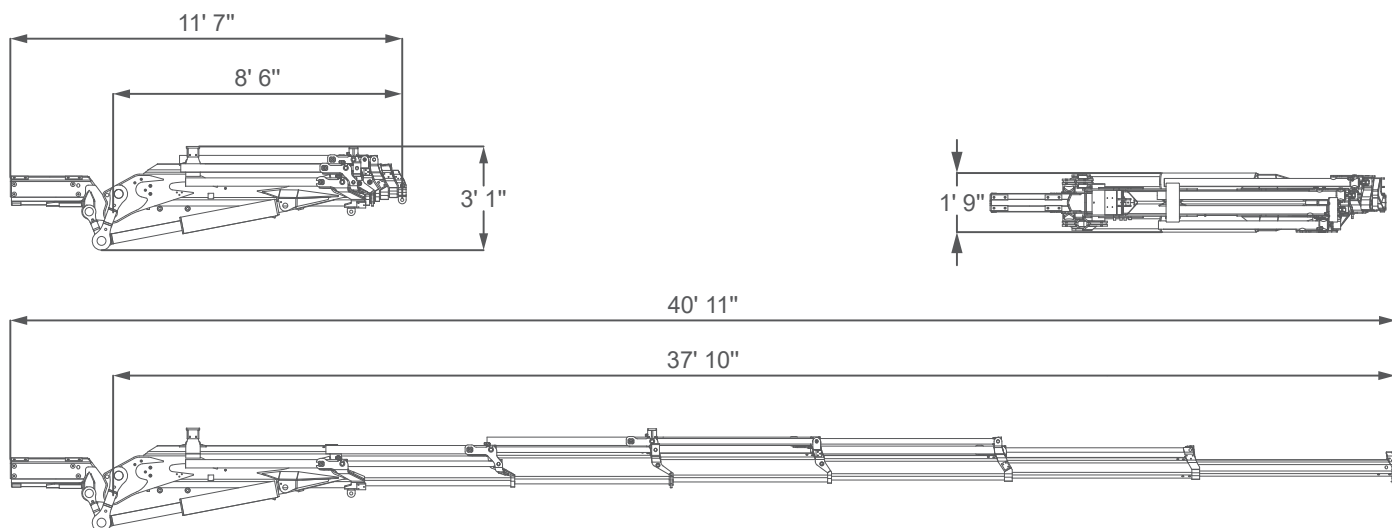


CRANE COLOR	STANDARD	PC1	PC1+PC2	PC1+PC2+PC3
Crane	<input type="checkbox"/> RAL2004	<input type="checkbox"/> RAL	<input type="checkbox"/> RAL	<input type="checkbox"/> RAL
Crawler & Frame	<input type="checkbox"/> RAL9005	<input type="checkbox"/> RAL7021	<input type="checkbox"/> RAL	<input type="checkbox"/> RAL
Carters & Tool Boxes	<input type="checkbox"/> RAL9005	<input type="checkbox"/> RAL7021	<input type="checkbox"/> RAL	<input type="checkbox"/> RAL
Outriggers	<input type="checkbox"/> RAL9005	<input type="checkbox"/> RAL9005	<input type="checkbox"/> RAL9005	<input type="checkbox"/> RAL9005

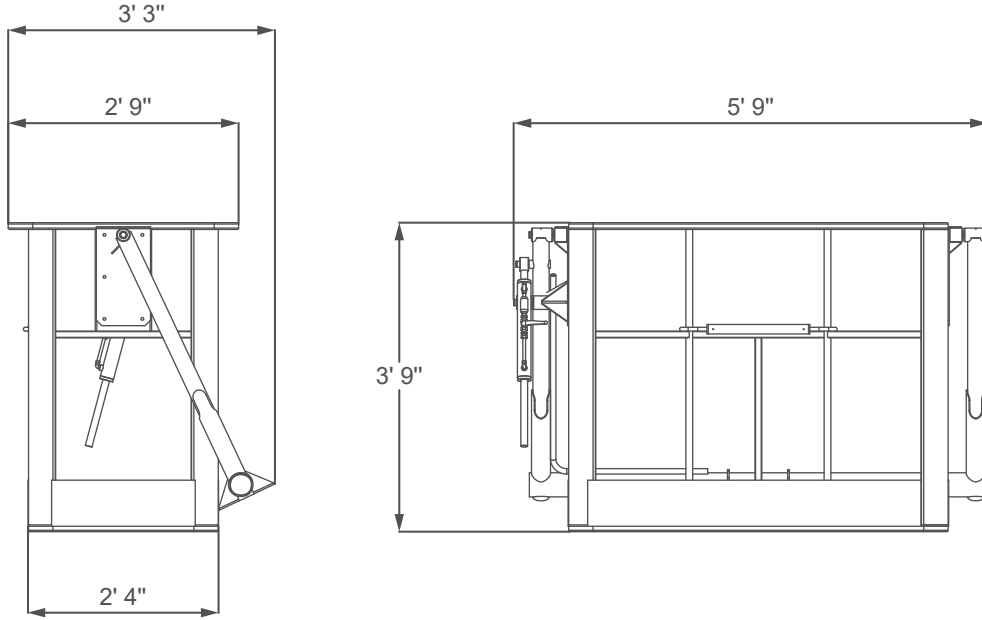


LAYOUT

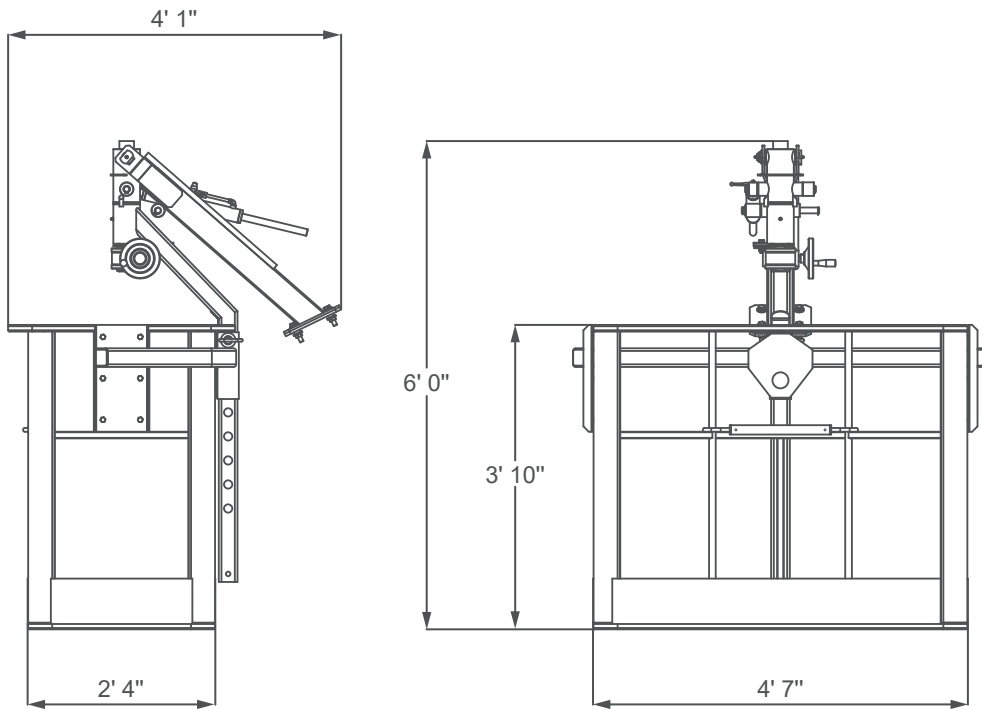
ACCESSORIES FEATURES JIB5400.6HA








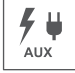











ACCESSORIES FEATURES
MWP-2PG.JIB5400.6HA



MWP-2PGR.JIB5400.6HA



SYMBOLS

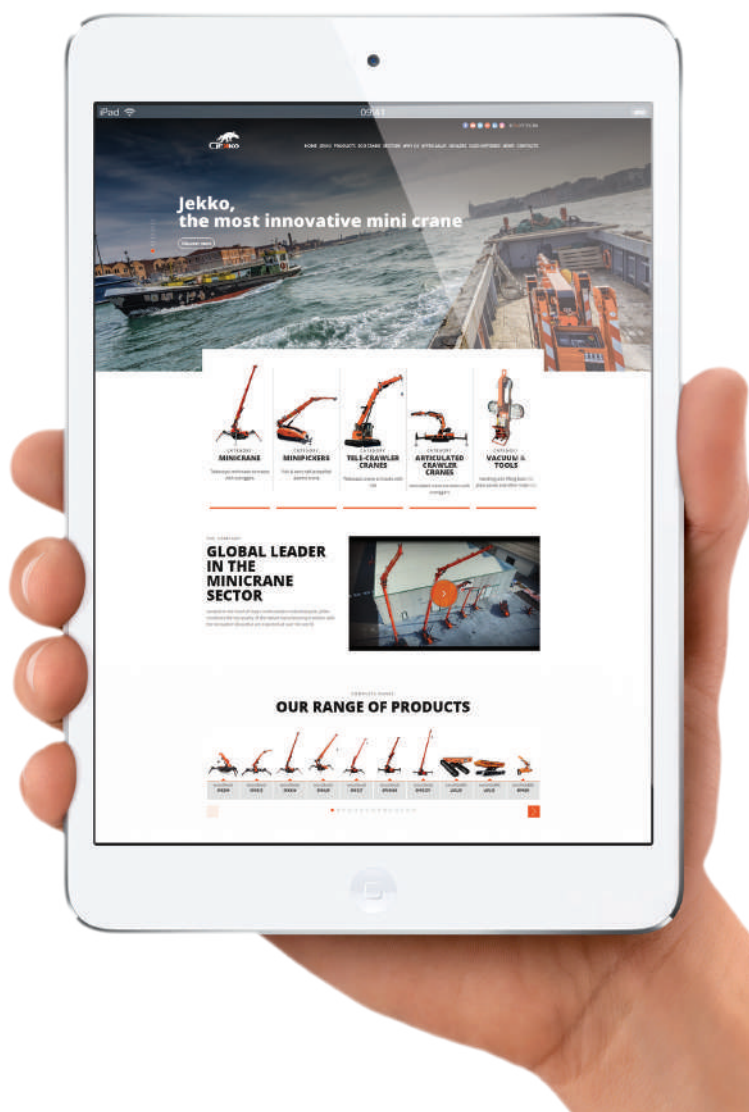
	Weight		Engine		Boom Angle		Outriggers Mats
	Crane		Power Pack		Boom Length		Hydraulic Oil
	Travel Speed		Slewing		Boom Radius		Working Temperature
	Gradeability		Outrigger Load		Track Loading		Load's Marking Pads
	Max Capacity						

REMARKS REFERRING TO LOAD CHART

- HC1 HD4 S2 lifting class according to EN12999:2011 standards.
- Lifting capacities are given in kilograms.
- The weight of the hook blocks and hooks is part of the load and therefore it must be deducted from the lifting capacities.
- Working radii are measured from the slewing centre.
- The lifting capacities given for the telescopic boom apply if the folding jib is removed.
- Subject to modification of lifting capacities.

**YOUR
JEKKO
DEALER**

EN All specifications and features herein described can be changed without prior advice. All indicated data are indicative only and are not binding as crane performs differently depending on its use. **IT** Tutte le caratteristiche e le specifiche descritte possono essere soggette a variazioni senza preavviso. Tutti i dati riportati sono forniti a puro titolo informativo e non sono impegnativi dal momento che le prestazioni della macchina variano in funzione dell'utilizzo. **DE** Unangekündigte Änderungen sämtlicher Eigenschaften und Daten sind möglich. Alle Angaben sind Richtwerte und nicht verbindlich da die Leistungen der Vorrichtung von deren Einsatz abhängen. **ES** Todas las características y las especificaciones aquí indicadas pueden ser sujetas a variaciones sin aviso. Se dan todos los datos aquí indicados como simples informaciones. No se consideran como vinculantes, dado que las prestaciones del maquinario pueden variar. **FR** Toutes les caractéristiques et le spécifications descriptives peut être sujet à variation sans préavis. Tout les données rapportés sont fournis à titre informatif et ne sont pas engager au moment que la prestation de la machine change en fonction de l'emploi.



www.jekko-cranes.com

Visit jekko-cranes.com to keep in contact with us, discover all the latest news and find out technical details of all our products.



Jekko s.r.l.

Via Campardone, 1 - 31014 Colle Umberto (TV) - Italy
info@jekko.it - www.jekko-cranes.com

07.02.2023 | Rev.7

SERIAL NUMBER:

